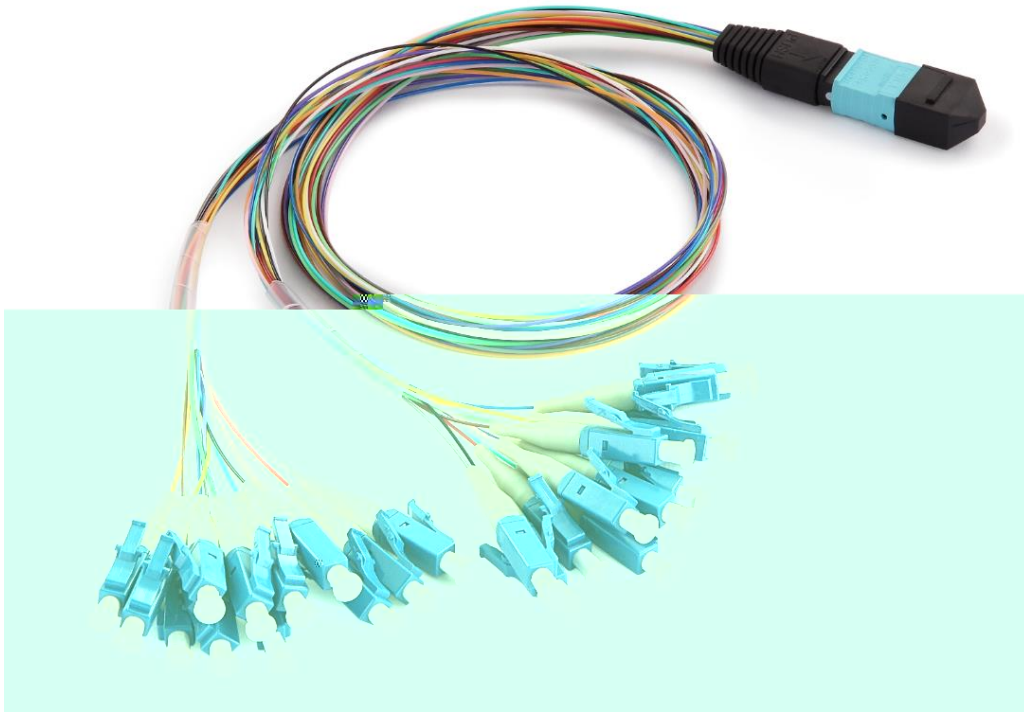


## MTP/MPO Hydra Cable



MPO/MTP Hydra cable assemblies are deployed inside plug and play cassette modules. It is used for multi-fiber to single-fiber splitting and interconnects. This solution is a 30-core, 0.9mm diameter utilizing MPO/MTP connector on one end and generic connectors (such as LC, SC, FC, etc.) on the other end. They are available for purchase as a bundle with plug and play modules, MPO/MTP Adapter Plates, and other solutions. It is fully configurable, available in 8/12/16/24 fibers versions as well as Multi-mode (Standard 50/125, 62.5/125, BI 10Gig 50/125) and Single-mode fiber types.

### Applications

- Data Center Interconnect
- Backbone Installations
- Telecommunication Networks
- Broadband/CATV Networks
- LAN/WAN premise

### Features

- Low insertion loss and high return loss
- High precision connector
- PC UPC APC end face polish
- Fiber count available in 4~24

Information and specifications are subject to change without notice.  
Please visit [www.china-tscom.com](http://www.china-tscom.com) for more information

8 Jinxiu Middle Road, Pingshan, Shenzhen, Guangdong, 518118, P. R. China  
86-755-2293688 | [info@china-tscom.com](mailto:info@china-tscom.com) | [www.china-tscom.com](http://www.china-tscom.com)



- Option for LSZH, PVC or Hytrel loose tube
- 100% factory terminated and tested
- Customized length available
- ROHS Compliant

**Standards compliance**

- EIA/TIA 604 series
- IEC 61754 Series
- IEC 61753-1
- GR 1435-CORE
- GR 326-CORE

**General Specification**

	Description	
Fiber Count	8~24 Fibers	
Fiber Mode	Single mode: G652/G657 Multimode: OM1 OM2 OM3; OM4	
Fiber Brand	SMF-28® Ultra optical fiber Corning ClearCurve® multimode fiber	
Cable Jacket Material	Low Smoke Zero Halogen (LSZH) PVC Hytrel	
Cable Jacket Ratings	Riser (OFNR) Plenum (OFNP)	
Cable Jacket diameter	600µm; 900µm	
Cable Jacket Color	Blue, Orange, Green, Brown, Grey, White, Red, Black, Yellow, Purple, Pink, Aqua	
Polarity	Customized	
MPO/ MTP	Ferrule	12F, 16F, 24F
	Connector Type	MTP, MPO
	Connector Brand	US Conec MTP, Senko MPO, Nissin MPO, Sanwa MPO, FURUKAWA MPO
	Connector Color	<b>Ferrule</b> <b>SM(APC)</b>

Information and specifications are subject to change without notice.  
Please visit [www.china-tscom.com](http://www.china-tscom.com) for more information



## Technical Specification

### MPO / MTP Termination

Optical Properties	Single mode		Multimode	
	Low loss	Standard	Low loss	Standard
Insertion Loss (dB)	$\leq 0.35$ (Typical: $\leq 0.25$ )	$\leq 0.75$ (Typical: $\leq 0.4$ )	$\leq 0.35$ (Typical: $\leq 0.2$ )	$\leq 0.60$ (Typical: $\leq 0.35$ )
Return Loss (dB)	PC $\geq 50$ ; APC $\geq 60$		PC $\geq 20$	
Wavelength (nm)	1310/1550		850/1300	
Durability	$\leq 0.2$ (dB)typical change, 50 matings			

### Single-fiber connector Termination

Optical Properties	Single mode		Multimode	
Insertion Loss (dB)	UPC $\leq 0.2$ ; APC $\leq 0.3$		PC $\leq 0.2$	
Return Loss (dB)	PC $\geq 50$ ; APC $\geq 60$		PC $\geq 20$	
Wavelength (nm)	1310/1550		850/1300	
Durability	$\leq 0.3$ (dB)typical change, 500 matings			